

# What is VIRTUAL BEHAVIOURAL MEDICINE ?

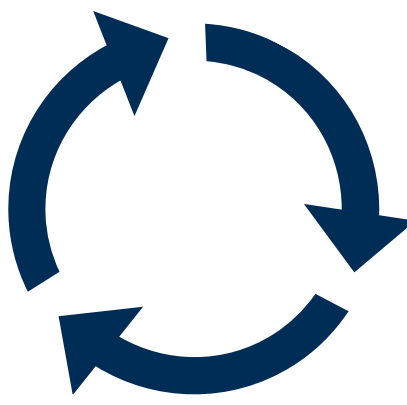
## VBM's Unique Value to the Healthcare System



**Rapid Access & Escalation Support** for patients in acute care, long-term care, and community.



Delivers **specialized neuropsychiatric care** across Ontario, regardless of location.



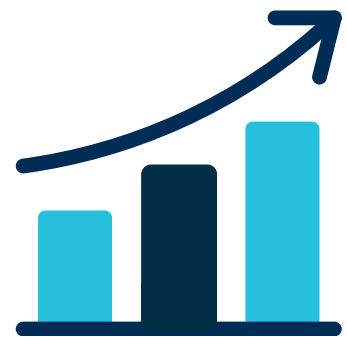
**Patient-centered** approach: Maintains patients in their **familiar environment**, reducing unnecessary admissions by **60%** to speciality behavioural units



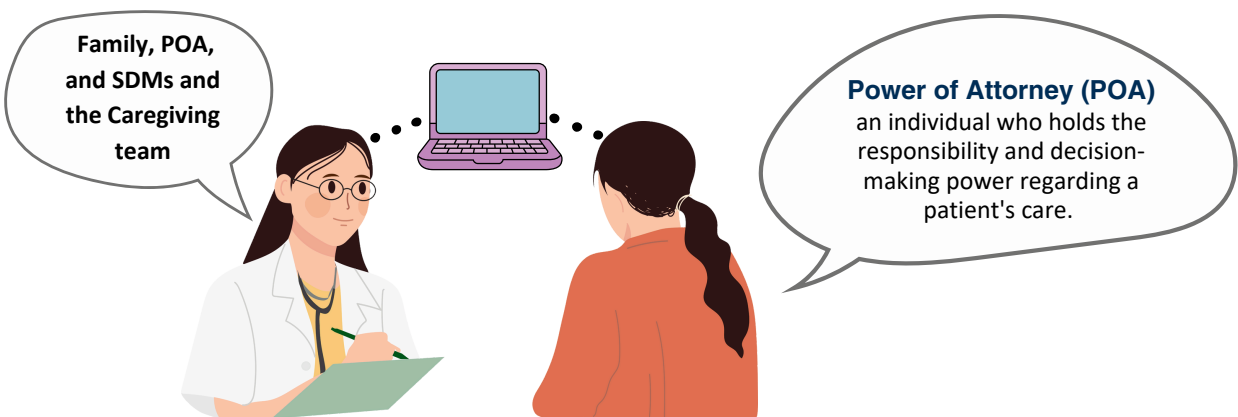
**Collaborative, intensive team-based care** augmenting existing behavioural strategies and resources.

## How Does VBM Support Physicians and Nurse Practitioners?

- **Rapid access** to specialized expertise for challenging cases
- **Builds capacity** and **enhances support** amongst healthcare teams in complex cases
- **Accessible escalation** to virtual consultations and frequent follow-ups to **support timely care**
- Offers guidance for **medication management** and family/caregiver support



## Who Makes Up the VBM Interprofessional Team?



## What Should Healthcare Providers Know About VBM?



VBM offers **knowledge-sharing** and expert support



VBM collaborates to **optimize** patient care and treatment goals



VBM supports **continuity** during transitions between environments



VBM **accommodates** provider schedules and **involves** families in care planning



VBM uses **novel treatment approaches** for **dementia** to improve patient outcomes



Scan to view VBM Baycrest Website